



KANSAS GEOLOGICAL SOCIETY

# BULLETIN

Volume 92 Number 4

July - August 2017

Established 1925

## IN THIS ISSUE

*Memorial Dr. Dan Merriam - 11*

*Memorial Jim Gowens - 13*

*Memorial R.D. Gus Messenger - 15*

***SAVE THE DATE - KGS GOLF TOURNEY SEPTEMBER 18***





# THE TOTAL PACKAGE

www.dawson3d.com



MIDLAND 432-684-3000 | HOUSTON 713-917-6772  
OKLAHOMA CITY 405-848-7512 | DENVER 303-723-0440  
PLANO 972-881-1099 | CALGARY 403-263-7770

## Use Your KGS Library For All Your Printing Needs

Old photos?  
Old documents?  
We can scan them for you!



## THE RIGHT CHOICE FOR SEISMIC



SERCEL UNITE & INOVA HAWK CABLE-LESS SYSTEMS

CENTRALLY OWNED & OPERATED IN WICHITA, KS

AHV-IV COMMANDER 362/364 VIBS

HSE MANAGEMENT PROGRAM

SAFETY & QUALITY ORIENTED

PERMITTING SERVICES

3500 N. Rock Rd. Bldg. 800 Wichita, KS 67226

Phone: (316) 636-5552 Fax: (316) 636-5572 Website: [www.parangongeo.com](http://www.parangongeo.com)



## New TrueLog

MJ Systems High Quality Depth Registered Raster Image Well Logs  
**Directly Import** into popular Mapping and Cross-Section Applications

**IT'S FAST • IT'S EASY • NO SOFTWARE • APPLICATION READY**

**► ORDER ► DOWNLOAD ► DIRECT IMPORT ► OWN THE LOGS**

- No Long Term Contractual Obligations
- Never Have to Delete the Logs you Purchase

Search Catalog at [www.mjlogs.com](http://www.mjlogs.com)

Call 1-800-310-6451 or email [esales@mjlogs.com](mailto:esales@mjlogs.com)

Providing Well Logs since 1971



# Table of Contents

---

## Features

Memorial for Dr. Dan Merriam	11
Memorial for Jim Gowens	13
Memorial for Robert D. “Gus” Messenger	15

## Departments & Columns:

KGS Tech Talks	4
President’s Letter	7
Advertiser’s Directory	8
Professional Directory	19
Kansas Geological Foundation Cornerstone	22
Exploration Highlights	25 & 26
Kansas Geological Foundation Memorials	27

## ON THE COVER:

*Collapse feature at Top of the Rock  
Greater Big Cedar Resort - Ridgedale MO.  
The collapse destroyed large synthetic putting green and driving range hole*

---

## CALL FOR PAPERS

The Kansas Geological Society Bulletin, which is published bimonthly both in hard-copy and electronic format, seeks short papers dealing with any aspect of Kansas geology, including petroleum geology, studies of producing oil or gas fields, and outcrop or conceptual studies. Maximum printed length of papers is 5 pages as they appear in the Bulletin, including text, references, figures and/or tables, and figure/table captions. Inquiries regarding manuscripts should be sent to [manager@kgslibrary.com](mailto:manager@kgslibrary.com) or mailed to 212 N. Market, Ste. 100, Wichita, KS 67202. Specific guidelines for manuscript submission appear in each issue of the Bulletin, which can also be accessed on-line at the Kansas Geological Society web site at <http://www.kgslibrary.com>

# SOCIETY Technical Meetings

## KGS 2017 Technical Talks

- **No Technical Talks Until September**

Please remember to check the website for the most up to date information on Technical Talks  
*<http://www.kgslibrary.com/techtalks.cfm>*

*Tech Talks are held at Landmark Square  
212 N. Market—4th floor  
In the Wisdom Center*



*Note: For those geologists who need 30 points to renew their licenses, there will be a sign-in sheet at each presentation and also a certificate of attendance.*



## BOARD OF DIRECTORS

---

### PRESIDENT

Paul Ramondetta

### PRESIDENT-ELECT

Beth Isern

### SECRETARY

Ken Dean

### TREASURER

Wesley Hansen

### DIRECTORS

Tim Hellman

Toby Eck

Rocky Milford

### ADVISORS

David Clothier

Curtis Covey

## COMMITTEE CHAIRMEN

---

### Advertising

### Advisory

### Annual Banquet

### Budget Committee

### Bulletin

### Continuing Education

### Distinguished Awards

### Environmental

### Field Trip

### Fishing Tournament

### Future Plans

### Golf

### Historian

### Investment

### Library

### Membership

### Nomenclature

### Picnic

### Public Relations

### Shooting Tournament

### Technical Program

Kent Scribner

Dave Clothier

Curtis Covey

Doug Davis

Wesley Hansen

Dave Clothier

Tim Hellman

Kent Matson

Larry Skelton

Randy Teter

Rob Patton

Larry Skelton

Chuck Brewer

Ted Jochems

Larry Friend

John H. Morrison, III

Larry Richardson

Dave Clothier

## BULLETIN STAFF

---

### EDITORS

Ernie Morrison

(316) 264-6366

Wes Hansen

(316) 772-6188

### ADVERTISING

Kent Scribner

Stelbar Oil Corp.

(316) 264-8378

### PROFILES/MEMORIALS

Robert Cowdery

### EXPLORATION HIGHLIGHTS

John H. Morrison, III

Independent O&G

(316) 263-8281

### STATE SURVEY

KS Geological Survey

(785) 864-3965

### SOCIETY NEWS

KGS Library

(316) 265-8676

### MANAGER

Tammy Nichols-interim manager

(316) 265-8676

### EDITOR EMERITUS

Wes Hansen

(316) 772-6188

Larry Richardson

(316) 262-8427

## K.G.S. LIBRARY

---

PHONE 316-265-8676 FAX 316-265-1013

email: [frontdesk@kgslibrary.com](mailto:frontdesk@kgslibrary.com) or

Web: [www.kgslibrary.com](http://www.kgslibrary.com)

## A.A.P.G. DELEGATES

---

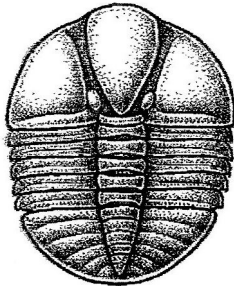
Ernie Morrison  
2018

Douglas Davis  
2018

The KGS *Bulletin* is published bi-monthly by the Kansas Geological Society, with offices at 212 North Market, Wichita, Kansas 67202 Copyright 2016, The Kansas Geological Society. The purpose of the *Bulletin* is to keep members informed of the activities of the Society and to encourage the exchange and dissemination of technical information related to the Geological profession. Subscription to the *Bulletin* is by membership in the Kansas Geological Society. Limited permission is hereby given by the KGS to photocopy any material appearing in the *KGS BULLETIN* for the non-commercial purpose of scientific or educational advancement. The KGS, a scientific society, neither adopts nor supports positions of advocacy, we provide this and other forums for the presentation of diverse opinions and positions. Opinions presented in these publications do not reflect official positions of the Society.



Twenty-two Trucks Serving  
 Kansas—Colorado—Texas—Nebraska—Illinois  
 DST's  
 Back Pressure testing (G1 & G2)  
 Slick line services using the same Weatherford  
 Electronic Pressure Gauges used on DST's



1-800-728-5369  
 FAX 1-785-625-5620

www.trilobitetesting.com  
 trilobite@eaglecom.net

SHOPS LOCATED IN:  
 Hays, KS  
 Scott City, KS  
 Pratt, KS  
 Hugoton, KS  
 Oberlin, KS  
 Clay City, IL

## CAN YOU NAME THE CRITTER?

Sponsored by Trilobite Testing, Inc.

Is your paleo up to date?

If you know the name of the trilobite,  
 submit your guess via e-mail to  
 manager@kgslibrary.com

Remember that *Trilobite Testing* is  
 sponsoring your efforts, so be sure to thank  
 Paul Simpson the next time you see him.

**CONGRATULATIONS!!**

**Randy Lilak correctly identified  
 The last one as: Harpides**

Bulletin committee members and PhD's in  
 Paleontology are prohibited from entering.



UNIVERSITY OF KANSAS STATE OF KANSAS STATE GEOLOGICAL SURVEY

Franklin D. Murphy, M.D., Chancellor George Docking, Governor

MINERAL INDUSTRIES COUNCIL

B. O. Weaver (77), Chairman Brian O'Brien (79), Vice Chairman  
 R. A. Spencer (77) E. J. Jungersen (78)  
 W. L. Stryker (77) George K. Mackie, Jr. (79)  
 Howard Carey (78) Charles Cook (80)  
 Simon S. Clark (78) Dana Hansen (80)  
 Lee H. Cornell (78) Joe E. Donham (80)

Frank C. Foley, Ph.D., State Geologist and Director  
 William W. Hambleton, Ph.D., Assistant State Geologist  
 and Assistant Director  
 Raymond C. Moore, Ph.D., Sc.D., Principal Geologist

STATE BOARD OF REGENTS

A. W. Hershberger, Chairman  
 McDill Bond  
 Claude C. Bradney  
 Ray Evans  
 Clement H. Hill

Mrs. Leo Harghey  
 Lawrence Margus  
 Oren Stadler  
 Harry Valentine

## THE SURFACE FEATURES OF KANSAS

By RAYMOND C. MOORE

**Get Your Maps copied at the KGS library**

**We can scan, copy, and print up to 44" wide**

**Color or Black & White**

**Solid Color @ \$4.00/sq. ft.**

**Line maps with color @ \$3.00/sq. ft.**

Tertiary HIGH PLAINS Cretaceous BLUE HILLS UPLAND Permian SMOKY HILLS UPLAND Pennsylvanian FLINT HILLS OSAGE PLAINS Ordovician and Cambrian Precambrian

# President's Letter

Greetings to all KGS Members!

*Hot time... summer in the city*, a time for swimming pools and ice-cold libation (unless you're sitting a well), and a very beautiful and green summer it is! Likewise, drilling activity continues at a steady clip despite the not so steady oil price. Crops are now being harvested, which will allow for increased drilling activity. We are, however, saddened by the recent loss of giants in the industry, such as Dan Merriam and Gus Messinger.

The society continues in its quest for a permanent library manager. Tammy Nichols is the interim manager, and continues the difficult task of maintaining the complex nature of its many functions. She and her staff of three (Rhonda, Angela, and Janice) have continued to provide the membership with trusted high quality service that all are accustomed.

Our large and complex collection of data is both unique and diverse. Both paper and digital records will ensure our continued relevancy well into the future. Both the Society and Foundation have recently decided to increase funding to the data integration process in order to accelerate its completion; we are adding additional employees to this end. We have a priceless irreplaceable asset of great historical and modern importance. I am committed to further enrichment of our collection and service to the public. Our financial standing remains strong.

The annual golf tournament is scheduled for September 18<sup>th</sup> (organized by Robert Patton), and the shooting tournament will be in October (organized by Larry Richardson). May this season bring you good luck with the drill bit, and a surge in growth. Thank you for your continued support.

Paul Ramondetta  
Kansas Geological Society President



Kansas State University  
**DEPARTMENT OF GEOLOGY**

Graduate education for active professionals in this innovative program, workshops, site visits and distance courses help professionals advance in their careers. Whether your goal is to receive academic credit, certifications or a master's degree in geology, you'll find a path that leads to your career goals.

**CHOOSE FROM SPECIALIZATIONS IN:**

- ▶ Petroleum geology
- ▶ Environmental geochemistry
- ▶ Structural Geology
- ▶ Groundwater
- ▶ Exploration geophysics
- ▶ Geomicrobiology

**LEARN MORE**

Contact Pamela Kempton, department head, for more information at [pkempton@k-state.edu](mailto:pkempton@k-state.edu). Or contact any of our program partners to learn more.

*K-State Global Campus: [dce.k-state.edu](http://dce.k-state.edu)  
 Geology department: [k-state.edu/geology](http://k-state.edu/geology)  
 Graduate School: [k-state.edu/grad](http://k-state.edu/grad)*



Log in to  
 Walters Digital Library  
 At  
[www.kgslibrary.com](http://www.kgslibrary.com)

Log in as our guest  
 and see the Society's Database  
 A convenient way to see what  
 you might want to order!  
 Call or email your order to:  
 316-265-8676  
[frontdesk@kgslibrary.com](mailto:frontdesk@kgslibrary.com)

**ADVERTISER'S DIRECTORY**

	<i>page</i>
Allied Cementing Company, Inc	24
Dawson Geophysical Company	2
Duke Drilling	24
GeoSteering	18
Kansas Geological Foundation	21
Kansas State University	8
Lockhart Geophysical	24
MJ Systems	2
Murfin Drilling Company, Inc	24
PARAGON Geophysical Services, Inc	2
Professional Directory	19
Trilobite Testing	6
Walters Digital Library	17
Well Enhancement Services, LLC	18

**ADVERTISER'S RATES: 2017**

<b>Full Page</b>	<b>B&amp;W</b>	<b>Color</b>
6 issues	\$2,000	\$2,500
3 issues	\$1,080	\$1,325
1 issue	\$480	\$525
<b>1/2 Page</b>		
6 issues	\$1,000	\$1,500
3 issues	\$540	\$825
1 issue	\$225	\$350
<b>1/4 Page</b>		
6 issues	\$600	\$900
3 issues	\$325	\$525
1 issue	\$150	\$250
<b>1/8 Page</b>		
6 issues	\$300	\$500
3 issues	\$175	\$325
1 issue	\$75	\$185
<b>Professional Ad (Business Card)</b>		
6 issues	\$90	\$180

*For one-time ads, call Kent Scribner at 316-264-8378*



UNIVERSITY OF KANSAS STATE OF KANSAS  
 Franklin D. Murphy, M.D., Chancellor George Docking, Governor

MINERAL INDUSTRIES COUNCIL  
 B. O. Weaver ('97), Chairman Brian O'Brien ('99), Vice Chairman  
 K. A. Spover ('92) E. J. Jennings ('91)  
 W. L. Stokley ('97) George K. Mackler, Jr. ('99)  
 Howard Casey ('88) Charles Cook ('90)  
 Susan S. Clark ('85) Don Harmon ('90)  
 Lee H. Cornell ('85) Joe E. Deiban ('86)

STATE GEOLOGICAL SURVEY  
 Frank C. Foley, Ph.D., State Geologist and Director  
 William W. Hankins, Ph.D., Assistant State Geologist  
 and Assistant Director  
 Raymond C. Moore, Ph.D., Sc.D., Principal Geologist

STATE BOARD OF RECENTS  
 A. W. Henkberger, Chairman  
 McDell Boyd Mrs. Leo Houghay  
 Clark C. Bradley Lawrence Morgan  
 Roy Evans Oscar Bradley  
 Clement H. Hall Harry Valentine

## THE SURFACE FEATURES OF KANSAS

By RAYMOND C. MOORE

**Get Your Maps copied at the KGS library**

**We can scan, copy, and print up to 44" wide**

**Color or Black & White**

**Solid Color @ \$4.00/sq. ft.**

**Line maps with color @ \$3.00/sq. ft.**

# Robert F. Walters Digital Library

**Log in as our Guest**

**username: guest**

**password: guest**

**316-265-8676**



**Let Us Print Your Geo Reports  
 And Save Your Time For Finding More Oil & Gas  
 Top Quality Color Printing For Our Membership**

Email your files to: [kgsorders@gmail.com](mailto:kgsorders@gmail.com)

*The KGS Library is pleased to  
announce a new service*



Creating  
LAS files  
from our logs  
or yours

**\$20.00 per  
curve!!**

Quick  
turn-around

Send us your log file  
or tell us which of  
ours you would like  
converted.

**316-265-8676**

## **Missing reference books and periodicals from the KGS Resource Room**

I'm channeling the spirit of my dear departed friend Bob Slamal. Bob was determined to organize all of the text books, survey bulletins and various publications that are in the resource room at the KGS Library. He spent countless hours on his own time to accomplish this task. Many years back, before his untimely death, he instituted a checkout policy for these materials. Cards were filled out with the borrower's name and publication, then placed in an envelope on the shelf where the publication was removed.

Recently I noticed many of these envelopes on the shelves and began to peruse them. Many items have been gone for years. I'm asking that each member check your reference materials for these missing items. I'm sure they will be marked as KGS property.

Please help me in this endeavor.

**Wes Hansen  
Editor**





---

# Memorial

---

## Memorial to Daniel Francis Merriam

1927 – 2017

By Lawrence H. Skelton

Daniel Francis Merriam, Doctor Dan to many friends and colleagues throughout the geological profession, died at his home in Lawrence, Kansas on 26 April 2017. He was the son of Faye M. Merriam and Amanda F. Merriam and was born 9 February 1927 in Omaha, Nebraska. Dan's father was a mechanical engineer and the family lived in various cities and states during his childhood. While still in high school, Dan enlisted in the United States Navy under a delayed enlistment program and reported to boot camp following graduation. After basic training, he was assigned to the battleship, U.S.S. Washington and then to the U.S.S. Callao, a gunship, serving as a fireman on both. While serving on the Callao on the East Coast, Dan met Annie Laura Young in Virginia. They married on 12 February 1946 in the Philadelphia Navy Yard chapel.

Discharged from the Navy soon after the end of World War II, Dan enrolled at the University of Kansas where he received the B.S. degree in geology in 1949; followed by an M.S. in 1953 and Ph.D. in 1961. Studying under the renowned Raymond Cecil Moore at K.U., Dan was classmates in graduate school with Paul Enos, Lee Gerhard, Bill Hambleton, John Harbaugh, Don Hattin, Phil Heckel and Calvin Noah. Dan was employed as a geologist with Union Oil in California from 1949 through 1951 and again in summer 1952. Returning to K.U. for his graduate studies, he was employed by the Kansas Geological Survey for the next two decades.

Geology was generally non-analytical until the 1950s when work began on statistical analyses of geological data and computer processing of the same. Dan recognized the value of those techniques and on returning to the Kansas Survey from a visit to Stanford University in 1963, established and led a Geological Research Section that later morphed into other research units within the Survey. As a result, the Survey would publish 50 Computer Investigation Series of which Dan authored or co-authored four and edited all. By 1969, Dan was in England where he earned the MSc degree in geology at the University of Leicester that he followed up in 1975 with a Doctorate of Science (DSc). He earlier in 1971 had been appointed by Syracuse University in New York as Jessie M. Heroy Distinguished Professor of Geology. He held this position for the next decade during nine years of which, he also chaired the Geology Department.

---

# Memorial

---

Dan returned to his Kansas roots in 1981 to become the Endowment Association Distinguished Professor of the Natural Sciences and Chair of the Geology Department at Wichita State University until 1987. He retired there in 1991 and moved to Lawrence, Kansas and his “original home”, the Kansas Geological Survey, where he took an appointment as Senior Research Scientist. He retired from the Survey in 1997 and assumed emeritus status at both K.U and Wichita State.

His early interest in computer applications to geology placed Dan in the vanguard of workers in that discipline. He was one of the founders of the International Association of Mathematical Geosciences (IAMG) and edited its journal, *Mathematical Geology*, for eight years. He edited various earth science journals and books published by Elsevier and Pergamon Press and was editor of *The Compass*, the journal of Sigma Gamma Epsilon, the earth science honorary society, for eight years. He edited the *Transactions of the Kansas Academy of Science* for ten years. During his long career, Dan authored more than 300 books, papers and maps, among which, his PhD dissertation, *The Geologic History of Kansas*, published as Kansas Geological Survey Bulletin 162 in 1963, has long served as an introduction and handbook for the state’s stratigraphy and structure for geologists working in Kansas.

His work was widely recognized and earned him many honors: the Krumbein Medal from IAMG, the William Smith Medal from The Geological Society [of London, the world’s oldest of such groups], the gold medal of Hornica Pribram (a mining and petroleum organization in Pribram, Czechoslovakia), the Haworth Distinguished Alumni Honors in Geology from the University of Kansas and presidential citations from other professional organizations. In 1979, he was appointed to the United States National Commission for UNESCO by Cyrus Vance, then the U.S. Secretary of State. Dan was an honorary member of AAPG, IAMG, SEPM, Sigma Gamma Epsilon, The Kansas Geological Society, a Senior Fellow of the Geological Society of America, and a Fellow of The Geological Society. He was a past National president of Sigma Gamma Epsilon and emeritus member of Sigma Xi, the honorary research society and president of the Kansas Academy of Science for 1989. Dan Merriam was a mentor and friend to students. He encouraged their participation in professional organizations and opened academic doors for them. A superb field geologist, he literally would take a student by the hand and place it on a stratigraphic contact or structure that they found difficult to perceive. While at Syracuse University, he organized and led several student field trips to well-known geological features in Europe. He knew many eminent geologists and when they visited Kansas at his invitation or were encountered at a national convention, he was sure to introduce any of his students who might be present. He also was a knowledgeable historian of geological personages and places and authored several extensive biographies of famous or notable geologists.

Dan is survived by Annie, his wife for 71 years, and four children: John, Anita, James and Judith, five sisters and one brother. He was preceded in death by his parents and son, Daniel Francis Merriam II.



---

# Memorial

---

**Jimmy Wayne Gowens**

**By Cheryl Gowens and Amber Hirschberg**

The passing of Jimmy Gowens has left a gaping hole in the geologic community and in many of our hearts as well. April 8, 2017 marked the end of his 16 month battle with Non-Hodgkin's Lymphoma. He faced cancer with the same quiet tenacity and resiliency that he used to approach challenges throughout his life. Despite continual complications, he always gave more than 100% and never complained. He became a "fan fave" among the doctors, nurses, and other personnel who treated him. His family is very grateful for the care and compassion of the staff of Shawnee Mission Medical Center and the University of Kansas Hospital. One of the milestones of Jim's life was a six week summer field course required by Baylor. His trip followed the route of Lewis and Clark. It was Jim's wish that some of his ashes be scattered in the Missouri River where these epic explorers began their journey. Jim also loved astronomy and the space program; some of his ashes will be launched into orbit later this year.

Jim was born in Batesville Arkansas to Ray and Inez Gowens. The family later moved to Corpus Christi Texas where Jim was raised, and where he married his high school sweetheart, Cheryl. After serving in the Army, Jim completed his degree in Geology at Baylor in 1973. His first job after graduation was for Texas Oil and Gas in Wichita. Six years later, Jim went to work for Floyd Wilson and the Reach Group. In 1987 the company became Hugoton Energy with Jim as Exploration Manager. In 1994 Hugoton Energy went public and Jim was VP of Exploration; active all over the US looking for companies to buy, and drilling wells. In 1998 Hugoton Energy was bought out by Chesapeake Energy Corporation and they moved to Oklahoma City. Jim accepted an early retirement package in 2013. The couple returned to Kansas, living in the Kansas City area to be near family, and he continued to consult. Through the ups and downs of the oil and gas industry, Jim always maintained his cheerful disposition and he was a great person to work with. His passion for learning was contagious. During his 44 year career, he looked for the best in others and always gave his best to loved ones and colleagues.

Jim is survived by his wife, Cheryl; his daughters, Heather Knight of Overland Park, Amber Hirschberg (Mike) of Hawthorne, NJ, and Amy Higgins (Andy) of Prairie Village; and grandson, Matthew Hirschberg. He is also survived by brothers, Paul (Pat) of Austin, TX, Frank (Mary) of St. Augustine, FL, Edward (Genny) of Elgin, TX and his late brother Kevin's widow, Susan Reitman of Georgetown, TX. □

A memorial has been established with the Kansas Geological Foundation and the family has asked that consideration be made to making donations to the American Cancer Society, Leukemia & Lymphoma Society, National Park Service or Public Broadcast System.

We have received many notes of condolence and stories about Jim but we do not have room to publish them all in this bulletin. Many of the highlights were about Jim's strong work

ethic, his ability to work hard while maintaining a great attitude, his ability to mentor, or his great sense of humor. His daughter, Amber Hirschberg, posted a loving Facebook tribute to her dad included below.

*My dad, Jimmy Wayne Gowens, passed away April 8th after 68 too short years on this earth. Actually, he was pretty tall. (That would have cracked him up.)*

*If you knew him, you truly loved him.*

*If you worked with him, you learned from him.*

*If you met his wife, you knew she was his high school sweetheart. They celebrated 46 years of marriage in March.*

*If you heard he had three daughters, you felt sorry for him. Just kidding, we are awesome and he'd tell you the same.*

*If you shook his hand, you said "geesh those are big hands." Big hands and an even bigger heart.*

*If you heard him speak, he was making you laugh. Dad jokes, political jokes, geology jokes, you name it.*

*If you smelled sawdust in his workshop, you were in awe of his skill and talent. Pen turning, woodworking, cabinetry, he could do it all.*

*If you saw him with his feet up, you heard him snoring. It's genetic.*

*If you found out he was a philatelist, you had to Google it.*

*If you got to hear him recite Canterbury Tales in the original Old English, you were seriously impressed.*

*If you knew what he did for a living, you knew the common types of metamorphic rock. Don't take them for granite.*

*If you saw his library you noticed he often read book series out of order. Not Always on purpose.*

*If you meet his grandson and grandson to-be, you'll know his sense of humor and spirit lives on.*

***Look up in the sky late in 2017; dad will be aboard the Celestis Memorial Spaceflight orbiting the earth.*** So know that he'll be looking down on you...and hoping you have that second helping of ice cream.

*He loved PBS and The National Parks.*

*He was treated by and cared for at the University of Kansas Cancer Center, and Kansas City Hospice House. He would wish others to be cured by the American Cancer Society, Leukemia & Lymphoma Society.*

*Consider donating and helping these causes that meant so much to him and his life.*

Editor's Note: Both Ernie Morrison and Wes Hansen wish to especially thank Joel Alberts for asking former co-workers of Jim's to send in their thoughts and stories of Jim. It was decided, however, that these additional stories would fill another couple of pages and detract from Jim's widow and daughters' personal memorial.



---

## Memorial

---

Robert D. "Gus" Messenger  
By Debra FitzGerald

Robert D. 'Gus' Messenger was born March 19, 1930 and passed peacefully in his sleep on February 23, 2017. He is preceded in death by his wife, Marilyn, and his son, Brad. He is survived by his daughter, Debra (Brian) FitzGerald, sons Frank Messenger and Robert Messenger, Jr., grandson Frank Messenger, granddaughter Chelsa (Jake) Messenger Buchanan, granddaughter Bevin (Whitney) Akers, grandson Jack (Cheryl) FitzGerald and two great-grandchildren, with a third on the way.

Gus grew up in McKeesport, Pa., and was raised by his Dad and his Grandpap and Grandma. His Grandpap, Gustav, came over from Germany when he was 13 years old and opened a local grocery store where 'little' Gus spent most of his time when not playing baseball or football. Gus was recruited to play football for a college, Wichita University, in Wichita, Ks. He came out by the train on his own and played his way through college, earning an undergraduate and later, Masters degree in Geology. There were many articles written about him and his athletic skills while he played football at WU. During that time he met the love of his life, Marilyn, and he was devastated when she passed away in 2013. Together they raised four children.

During that time he worked in oil and gas exploration and was very successful. He started at Petroleum Inc., as did many Wichita geologists as it was a great training ground. Fellow geologists there were Dick Linehan, Fred Stump, and Deane Jirrels. This group, with their families, would travel every summer to the Branson area to Mittens Resort for fun and fishing. Gus eventually paired up with Gene Falkowski and they started up F & M Oil Company along with a lifetime friendship. During the last years of his life he partnered up with his daughter, Debra FitzGerald, and together they had a great time with exploration.

Gus also loved to share stories about well-site adventures, talk about geology, and politics, in the fifth-floor lounge of Landmark Square. The gathering area is filled with geologic maps, "donated" chairs and couches, and reference material. This area was occasionally used for a little betting, along with a lot of coffee drinking, and a little beer drinking in the late afternoon. While there are still a few that gather, the group included: Bob Cowdery, Bill Shepherd, Dallas Donner, Arden Ratzlaff, Kent Crisler, Tyler Sanders, Eldon Shirling, Jay MacNeil, Harvey Gough, Danny Klaus, Dave Barker, Bob O'Dell, Bob Stozle, Tim Pierce, Mike Maune, Wes Hansen, Bobby Bass, and many more regulars and occasional drop-by friends.

Gus and Marilyn were blessed to travel the world and many of those trips were with a large golf group of friends. They had many great adventures. On a trip to Italy and because of Marilyn's love of Andrea Bocelli, they included a detour to drive by the opera singer's villa. Marilyn 'encouraged' Gus to climb up on the wall to take pictures. He got the picture, but needless to say they were quickly requested to leave the property. Anyone who knew Gus knew of his LOVE for his wife and family, the Steelers and the Shockers, and Geology. Gus was a member of the Kansas Geological Society, Kansas Geological Foundation, American Association of Petroleum Geologists, and was always a generous contributor to the WSU athletic department. Since his death there have been many contributions to the Kansas Geological Foundation in his memory for which his family is very grateful.

# **Save the Date**

## **KGS 2017 Golf Tourney**

**September 18, 2017**

### **AAPG Section Meeting Updates**

**Eastern - Morgantown W. VA - Sept. 24-27**

**Mid-Continent - Oklahoma City, OK - Sept. 30-Oct. 3**

**Gulf Coast San Antonio, TX - November 1-3**

#### **EDITOR'S NOTE:**

In the far distant past, there was an effort to get the membership to agree to receiving the Bulletin online on the KGS website in pdf format. I, as well as the vast majority of the membership, opted to continue getting a mailed hard copy. In my current capacity as treasurer of the KGS, it has become apparent to me that we need to really consider going to online only or possibly assessing a surcharge to cover the printing and mailing costs of the Bulletin. Our current costs of printing and mailing the Bulletin are not covered by our declining advertising revenue. I welcome input from the membership on this matter.

My email is *whansen4651@sbcglobal.net*.

I will endeavor to come up with some hard numbers for the next issue. Obviously, no changes will occur prior to the end of the current calendar year.



# Robert F. Walters Digital Library

The most complete source for Kansas data

## Database updated nightly

Day or Night

You can get to the data as you need it

# www.kgslibrary.com

## To Join: call 316-265-8676

The screenshot displays the Robert F. Walters Digital Geological Library website. The main search results table lists well data:

Well No.	Spot	Location	N S	E W	Spud	Completion	Depth	ElFB	ElEP	ElGL	Status
15-03-0002	1	... 01' EX	3300 PSL	1990 FEL	10/12/07	5101	2034				
15-03-0004	1	... 02' EX	460 PSL	1320 FEL	12/26/2000	4910	2001				
15-03-0005	1	... 01' EX	2310 PSL	2310 FEL	12/20/2000	5015	2002				
15-03-0009	1	... 02' EX	1320 PSL	1320 FEL	06/26/2003	4910	2017				
15-03-0060	1	... 01' EX	1320 PSL	2960 FEL	07/03/2003	5461	2042				
15-03-0061	1	... 02' EX	4210 PSL	2970 FEL	02/27/2003	4910	2006				

Below the search results, there are three preview windows:

- Completion Card - 10G:** Shows a completion card for BARBARA OIL CO. with details like Cont: PICKRELL, Z-047, and R. 2050RE\_Comm.
- Well Log:** A detailed well log for BARBARA OIL COMPANY, well WASHN E.E. NO. 1, showing test data and completion details.
- Drill Stem Test:** A preview of a drill stem test report for the same well.

## WOULD YOU LIKE TO INCREASE YOUR PRODUCTION AT A FRACTION OF THE COST OF HORIZONTAL DRILLING?



**Well Enhancement Services, LLC** is jetting laterals utilizing new technology and coiled tubing. We now have the ability to place hundreds of gallons of acid hundreds of feet away from the well bore. This allows us to not only enhance existing production but to produce reserves previously unreachable. It has established itself by repeatedly increasing production in both new and existing wells. Contact us for more information, questions or to schedule your next well with **WES**.



### Please Contact Us:

Phone: (785) 625-5155

Fax: (785) 625-4151

Field: (785) 259-4638

wesofhays@hotmail.com  
Box 87, Schoenchen, KS 67667

*“Tap into success....with WES”*

www.**GeoSteering**.com

281-573-0500

info@geosteering.com

**Free introductory consultation with modeling: let us demonstrate whether images or propagation resistivity could add value to your well.**

**Personnel with degrees & 20+ years of oilfield experience**

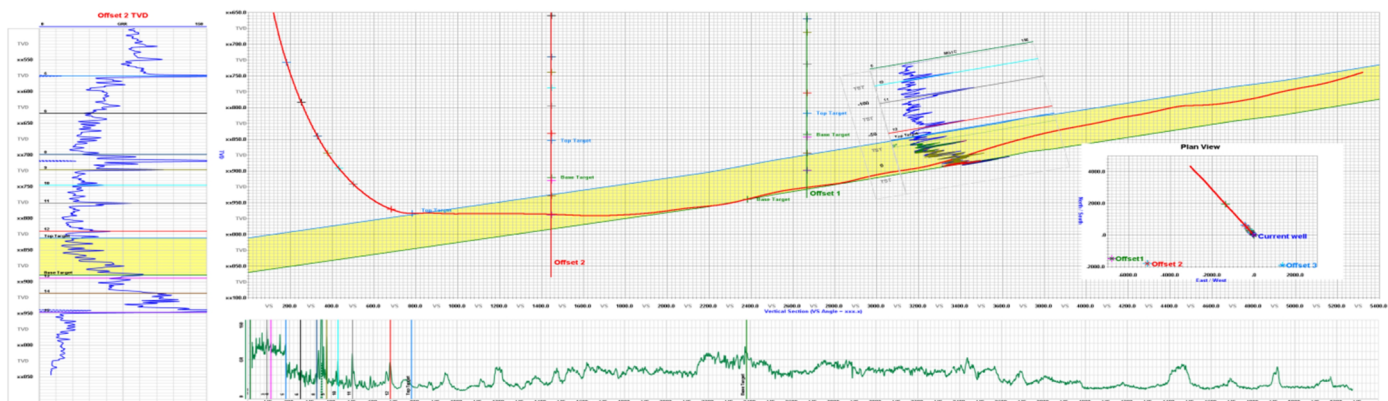
**Proprietary software**

**TST interpretation for GR only jobs**

**Image displays / interpretation for jobs with azimuthal GR, resistivity or density**

**Resistivity modelling / interpretation for jobs with LWD propagation resistivity**

**Real-time (always)**



# PROFESSIONAL DIRECTORY

**Kirk Rundle**  
**Consulting Geophysicist**

3D Seismic Design, Acquisition to Processing QC.,  
 Interpretation and Analysis, Subsurface Integration  
 7340 W. 21st. N., Ste. 100  
 Wichita, Kansas 67205

Office: 316-721-1421 Fax: 316-721-1843  
 Email: kirk@rundlegeo.com

**Covey The Well Watchers**  
*One Thousand Wells and Counting"*

**Curtis E. Covey Wellsite Petroleum Geologist**

Gas Trailer Cell: 316-217-4679 Office: 316-776-0367  
 Email: wellsitgeol@gmail.com 6548 Bedford Circle  
 Derby, Kansas 67037

*Gas Detection Trailer & Internet/Phone Communications*

**ROGER L. MARTIN**  
*Independent Petroleum Geologist*


200 E 1st St, Ste 405, Wichita, KS 67202

Cell: 316-833-2722 Office: 316-250-6970  
 KS Field Cell: 316-655-1227  
 Fax: 316-425-3829  
 Email: rogermartingeo@yahoo.com

**ALFRED JAMES III**  
**Petroleum Geologist**  
 Kansas - Colorado - Utah

4912 E. 29th St. N., Ste. 3, Wichita, Kansas 67220

SIPES # 1111  
 Office (316) 267-7592  
 james.alfred21@yahoo.com



**Scott Banks**  
 Petroleum Geologist  
 banksbs@aol.com  
 Cell: 316.253.8550

1700 N. Waterfront Pkwy.  
 Bldg. 300 • Suite C  
 Wichita, KS 67206

Phone: 316.558.5262  
 Fax: 316.558.5263

**M. (Brad)ford Rine, Geologist**

*Licensed, Registered, Certified*


PROSPECT EVALUATION PROSPECT ORIENTATION  
 WELLSITE SUPERVISION DRLG/COMPL CONSULTATION  
 RESERVOIR STUDIES PROPERTY EVALUATION  
 EXPERT TESTIMONY BANJO PICKER

100 South Main Suite #415  
 Wichita, Kansas 67202 Email: rinemb@sbcglobal.net  
 Office & Cell: (316) 250-5941

**WESLEY D. HANSEN**  
**Consulting Geologist**

Well site Supervision • Geologic Studies  
 212 N. Market, Ste 257  
 Wichita, Kansas 67202  
 Office/Mobile: (316) 772-6188  
 whansen4651@sbcglobal.net  
 35 Continuous Years in the Kansas Oil Patch

Your business card ad  
 Could be right here  
 For only \$90/year



**KEVIN L. KESSLER**  
 INDEPENDENT/CONSULTING PETROLEUM GEOLOGIST

WELLSITE SUPERVISION • GEOLOGIC RESEARCH  
 OIL & GAS PROSPECTS  
 KANSAS & EASTERN COLORADO

MAILING ADDRESS PHONE  
 1199 N. PONDEROSA RD. RES.: (316) 522-7338  
 BELLE PLAINE, KS 67013 MOBILE: (316) 706-6636  
 EMAIL: KKESSLER1199@AOL.COM

**MELLAND ENGINEERING, INC.**  
*Petroleum Engineering & Geological Consulting*

**James E. Melland, P.E., P.G.**  
 President

Office: (620) 241-4621 Fax: (620) 241-2621

jamesm@mellandengineering.com  
 www.mellandengineering.com

P.O. Box 841, McPherson, KS 67460

Your business card ad  
 Could be right here  
 For only \$90/year

**WOW**  
**CHEESESTEAKS**  
 AND HOAGIES  
 803 NORTH WEST STREET  
 WICHITA, KANSAS - 67203  
 (316) 491-1239  
 CALL OR COME IN - SEATING INSIDE  
[www.wowcheesesteaks.com](http://www.wowcheesesteaks.com)

# Robert F. Walters Digital Library

The most complete source for Kansas data

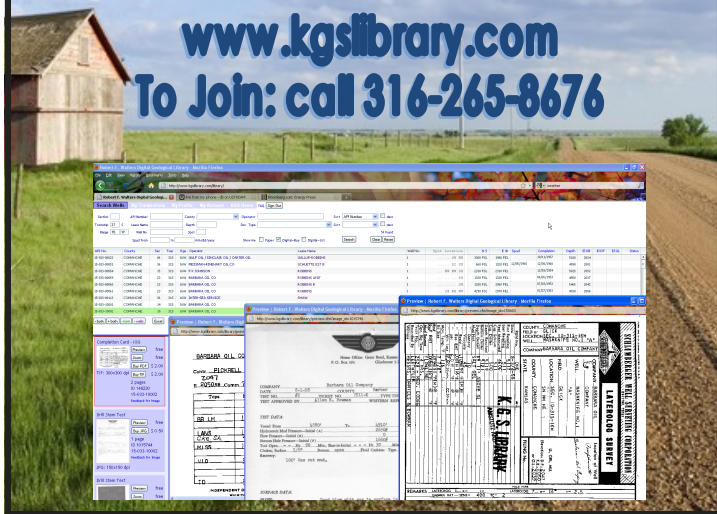
Database updated nightly

Day or Night

You can get to the data as you need it

[www.kgslibrary.com](http://www.kgslibrary.com)

To Join: call 316-265-8676



## We Invite You To join

### Kansas Geological Foundation

*\$50.00 membership is  
tax deductible*

Call 316-265-8676

Or send checks to:  
Kansas Geological Foundation  
212 N. Market, Ste. 100  
Wichita, KS 67202

### NOTICE!!!! WSU GEOLOGY CLUB & Papa John's Pizza

Papa John's offered WSU student organizations an opportunity to raise monies for their organizations.

The **WSU Geology Club** is participating  
And **YOU** can help them!

When ordering pizza from Papa John's,  
Use this code: **WSU004**  
(those are zero's, not letter O)

With this code, the customer will receive 40% off their entire online order and WSU's AAPG Student Chapter will receive 10% of the money spent on the order.

**Eating pizza tonight?  
Let's help WSU Geology Club!**

Monies raised will be used towards gas money to travel to local schools when they promote the geosciences to grade schools, registration costs for workshops, seminars and AAPG Student Expos, and social and academic events like an upcoming "Lunch and Learn" series next fall.

### The Following Are For Sale

*Kansas Completion Cards:*  
Several sets (call for more information)

*Oklahoma Completion Cards*

*New Mexico Completion Cards*

*North Dakota Completion Cards*

*Utah Completion Cards*

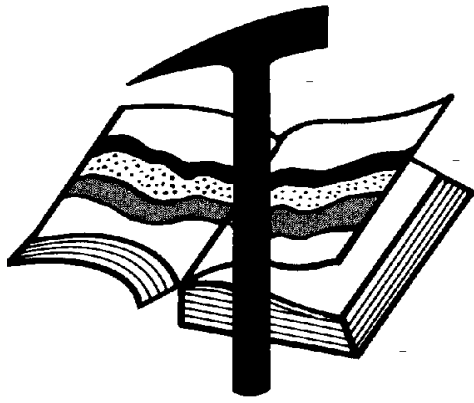
*Microfiche Electric Logs*

*Kansas  
Oklahoma  
Texas*

### **Geological Office Furniture:**

- 8-drawer completion card cabinets
- 7-drawer cabinets
- Map cabinets—metal—2 available
- Map racks—different sizes

**Call: 316-265-8676**  
**Ask for Ted**



# Kansas Geological Foundation

Web Site: [www.kgfoundation.org](http://www.kgfoundation.org)

**212 North Market  
Wichita, Kansas 67202**

A not-for-profit educational and scientific corporation

## **GOALS:**

- promote geology and earth science
- preserve geological records
- establish memorials and endowments
- support field trips and seminars
- financial aid and grants to students

**PLEASE HELP SUPPORT THE FOUNDATION**

## **Kansas Geological Foundation Services**

The Kansas Geological Foundation provides the following services as a part of the organization's commitment to educate the public regarding earth science.

### **Speaker's Bureau**

A list of speakers available to talk about various aspects of geology may be obtained by contacting Janice Bright at the KGS Library, 265-8676. This service is free to the public.

### **DVD/Videotape Library**

The KGF maintains a DVD & videotape library focused primarily on the various fields of earth science. These tapes may be checked out without charge by the public. To obtain a list of tapes, please contact the KGS Library, 212 N. Market, Ste. 100, Wichita, KS 67202, or call Janice Bright at 265-8676.

The Kansas Geological Foundation was founded in March, 1989 as a not-for-profit corporation under the guidelines of section 501(c)(3) of the tax code to provide individuals and corporations the opportunity to further the science of geology. It is dedicated to providing charitable, scientific, literary and educational opportunities in the field of geology for the professional geologist as well as the general public.

KGF can receive in-kind donations through which the donor may receive a tax deduction. Of equal importance, the KGF provides the financial resources to sort, process and file this data at the KGS library. If you have a donation to make, please contact the KGF at 265-8676.

Your tax-deductible membership donation helps to defray the cost of processing donations and to support public education programs about the science of geology. Annual membership begins at \$50.00 per year. Donations of \$100.00 or more are encouraged through the following clubs:

<b>Century Club</b>	\$ 100 to \$ 499
<b>\$500 Club</b>	\$ 500 to \$ 999
<b>Millennium Club</b>	\$1000 to \$5000
<b>President's Club</b>	\$5000 and over

# *Kansas Geological Foundation*

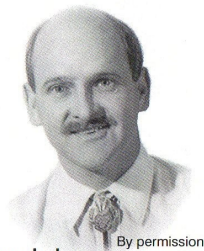
## *Cornerstone*

### *Kansas Geological Foundation News*

#### **Fall 2017 Scholarship Recipients**

Mikaela Rader	Kansas State University	\$500.00
Amy Olson	University of Kansas	\$500.00
Robert Baker	Wichita State University	\$500.00
Jonathan Woods	Wichita State University	\$500.00
Stacy Hendricks	University of Kansas	\$500.00
Logan Behr	Fort Hays State University	\$500.00
Isaac Allred	University of Kansas	\$500.00
Larissa Howard	Fort Hays State University	\$500.00
Kathleen Graham	University of Kansas	\$500.00

#### **The Kansas Geological Foundation Needs You!**



The KGF provides the financial resources to sort, process and file, in-kind donations of geological data at the KGS library. Due in large part to the KGF this unique and rare well of information is being made available to all. Please consider telling your company management and colleagues about the benefits of a library that continues expanding in part because of the KGF.

**We very much value and need your financial support.**

#### **KGF Officers and Board Members**

**President- Larry Richardson**  
**Vice President - Marc Summervill**  
**Treasurer - Wes Hansen**  
**Secretary - Ken Wallace**

#### **Board Members**

**Monica Williams**  
**Bryce Bidleman**  
**Brian Fisher**  
**Ken Leblanc**  
**David Doyel**

# *Kansas Geological Foundation News*

Students: The KGF awards scholarships each December and May. Check with your department chairs for applications. You must submit complete applications by the deadline.

**Applications for the Spring semester will be due by December 1, 2017.** At the December KGF meeting the recipients for Spring 2018 scholarships will be determined.

Grants to help with research on Kansas related geology are also considered for aid.

## **Kansas Geological Foundation Video / DVD Collection**

The KGF has an extensive collection of videos available for check-out at no charge.

Only pay for shipping back.

These are ideal for classroom or general public viewing.

See the web for titles & descriptions  
[www.kgfoundation.org](http://www.kgfoundation.org)

Call 316-265-8676  
Ask for Janice to check out videos



**Robert F. Walters Digital Library**  
The most complete source for Kansas data  
**Database updated nightly**  
**Day or Night**  
**You can get to the data as you need it**  
**[www.kgslibrary.com](http://www.kgslibrary.com)**  
**To Join: call 316-265-8676**

**12 Drilling Rigs**  
**To depth of 8,500 ft.**



**WESTERN KANSAS**  
**SOUTHERN NEBRASKA**  
**EASTERN COLORADO**

For contract information contact:  
**Blaine Miller**  
 Drilling Manager

**316-858-8607 (Direct)**  
**316-267-3241 (Main)**

**250 N. Water, Ste. 300**  
**Wichita, KS 67202**

**DRILLING COMPANY**

**ROTARY DRILLING CONTRACTOR**

620 Hubbard PO Box 823  
 Great Bend, KS 67530  
 Phone 620-793-8366

100 S. Main, Ste. 410,  
 Wichita, KS 67202  
 Phone 316-267-1331  
 Fax 316-267-5180

**2D & 3D Vibroseis Acquisition**  
**ARAM\*AIRES Seismic Recording System**

1600 Broadway, Suite 1660 • Denver, CO 80202-4915  
 (303) 592-5220 • info@lockhartgeo.com  
 for complete information go to: www.lockhartgeo.com

Great Bend (620) 793-5861    Ness City (785) 798-3843    Medicine Lodge (620) 886-5926

**GREAT BEND 793-5861    NESS CITY 798-3843**  
**MEDICINE LODGE 886-5926**

**Russell (785) 483-2627    Oakley (785) 672-3452**

**AAPG Needs You!**  
**Professional geoscientists, share your world!**

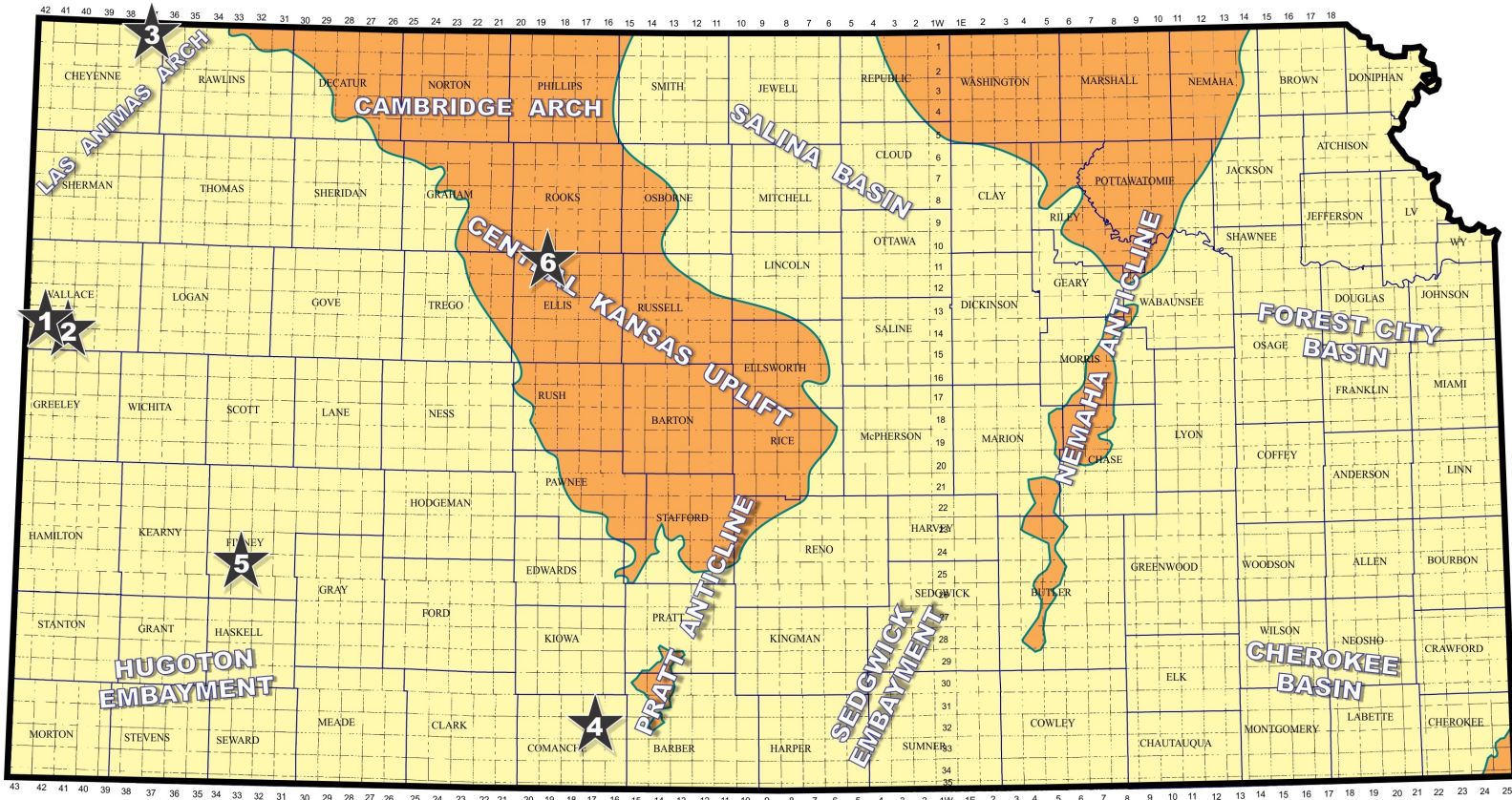
The Mid Continent Section has **17 AAPG Student Chapters**, but only **3 Visiting Geoscientists**...which makes it almost impossible to have a professional geoscientist visit to each school at least once a year or even once every two years. The aim of AAPG's program is to give students a flavor of a professional life in energy resources. It also hopes to encourage dialog between industry and academia.

To be a Visiting Geoscientist bearing the AAPG flag, you are asked to have at least 5 years of experience and make at least one visit per year to a university. It can be a school with an AAPG Student Chapter, or a college/university without one. Your choice.

The Mid Continent schools with Student Chapters are: Missouri University, Fort Hays State University, Iowa State University, Kansas State University, Missouri State University, University of Nebraska, Northwest Missouri State University, Oklahoma State University, University of Oklahoma, University of Arkansas, University of Iowa, University of Kansas, University of Missouri, Columbia University of Tulsa and Wichita State University.

Contact Robbie Gries, co-Chair VGP committee, Denver, if you are interested in learning more. rrgries@aol.com





Map courtesy of Marc Summervill

Wichita-based **Red Oak Energy** has discovered Morrow gas reserves near the Ladder Creek Northwest Field (Morrow oil) in Wallace County. The #1-34 Rita Doidge is flowing 4,000 Mcf of gas daily at site located in the NW/4 of section 34- T14s- R41W. Morrow gas is new pay for the field which was discovered by Red Oak Energy in late 2011. Production perms are being held confidential at this time. Total depth is 5235 ft. (API 15-199-20437)

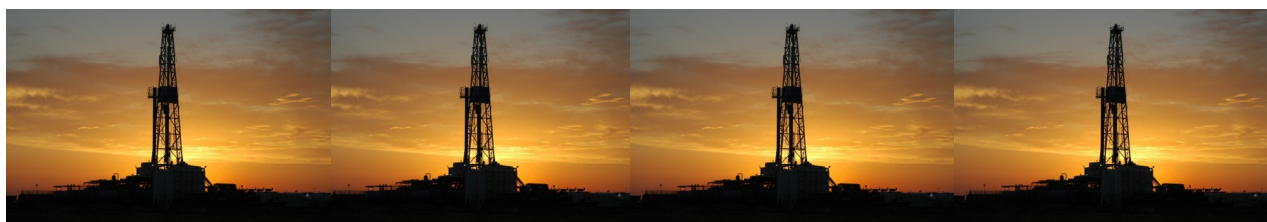
Red Oak Energy's #1-35 Prairie Wind that established the Ladder Creek Northwest Field in the SW/4 of section 35 T14s- R41W, was completed for 180 bbls of oil per day from Morrow perms between 5018 to 5024 ft. Total depth was 5202 ft. To date, the field has produced over 104,000 bbls of oil. Field area is situated about 6 miles south and 6 miles west of the town of Russell Springs, KS. (API 15-199-20391)

**Murfin Drilling Company** of Wichita (KS) has completed a new pool discovery well in Cheyenne County. The #1-24 Carolyn A has discovered new Lansing-Kansas City oil reserves in the SE/4 of section 24- T1s- R37W, about 15 miles northeast of Bird City, Kansas. The new unnamed oil field lies over one mile northwest of known LKC oil reserves in the Brumm North Field (1978). The Brumm North pool has given up nearly 15,000 bbls of oil from the LKC since reserves were found in August of 2012. (API 15-023-21463)

**Castelli Exploration** of Oklahoma City (OK) is producing oil from the Mississippian formation after a successful wash down and completion of the #1 Peoples in the NE/4 of section 17- T32s- R17W in Comanche County. The wildcat well (show hole) was originally drilled by Graves Drilling Company in 1988 and was plugged and abandoned at a total depth of 5,850 ft. A drill stem test at the time had revealed gas shows and a recovery of 310 ft of clean oil, 30 ft of mud cut oil and 450 ft of salt water. Castelli cleaned old hole out and perforated and fracked the Mississippian from 5158-5170 ft. No production data has been released to date. The well establishes a new oil unnamed oil field about 5 miles southeast of the town of Wilmore, Kansas. (API 15-033-20733)

**Merit Energy Company, LLC**, of Dallas (TX), has discovered Mississippian Chester oil deposits at their #1 Reeve in Finney County, southwest Kansas. The wildcat well was drilled to a total depth of 5275 ft at location in the SW/4 of section 14- T25s- R33W, about 5 miles south and 1.5 miles west of the town of Garden City. The new reserves were found over 1.25 miles northeast of Merit's recent discovery of the Coyote Northeast pool (2015) in section 27- T 25s- R33W. The firm's #6 Drussel A was completed for 46 bbls oil daily, no water, with pay recovered from perfs in the Marmaton from 4512-4517 ft and Morrow from 4873-4876 ft and 4964-4976 ft. Closest Mississippian oil production in the vicinity is located over two miles from discovery site. (API 15-055-22449)

**Stroke of Luck Energy & Exploration LLC**, of Tecumseh (KS), is producing an unknown amount of crude from the Conglomerate formation at the #02-1116 Custer Valley in Ellis County. The new unnamed pool opener discovered the new reserves at location in the NE/4 of section 25- T11s- R19W, about 4.5 miles north and 0.75 miles east of the town of Hyacinth, Kansas. The well topped the Conglomerate zone at 3570 ft (-1527 kb) and was bottomed at a total depth of 3715 ft. Production perfs are confidential at this time. Drill site is situated nearly one mile west of the established Riverview Field which has given up crude from the Shawnee (Topeka), Lansing-Kansas City and Arbuckle formations since 1943. (API 15-051-26853)



# Kansas Geological Foundation Memorials

KGS Member	Date Deceased	Memorial Est.	KGS Member	Date Deceased	Memorial Est.
Dan Bowles	09/89	1990	Claud Sheats	02/02	2002
John Brewer	10/89	1990	Merle Britting	2002	2002
George Bruce	08/89	1990	Harold Trapp	11/02	2002
Robert Gebhart	01/90	1990	Donald M. Brown	11/02	2003
Ray Anderson, Jr.	11/90	1990	Elwyn Nagel	03/03	2003
Harold McNeil	03/91	1991	Robert Noll	09/03	2003
Millard W. Smith	08/91	1991	Benny Singleton	09/03	2003
Clinton Engstrand	09/91	1991	Jay Dirks	2003	2003
M.F. "Ted" Bear	10/91	1991	J. Mark Richardson	02/04	2004
James & Kathryn Gould	11/91	1991	John "Jack" Barwick	02/01	2004
E. Gail Carpenter	06/91	1993	Richard Roby	03/04	2004
Benton Brooks	09/92	1992	Ruth Bell Steinberg	2004	2004
Robert C. Armstrong	01/93	1993	Gordon Keen	03/04	2004
Nancy Lorenz	02/93	1993	Lloyd Tarrant	05/04	2004
Norman R. Stewart	07/93	1993	Robert J. "Rob" Dietterich	08/96	2004
Robert W. Watchous	12/93	1993	Mervyn Mace	12/04	2004
J. George Klein	07/94	1994	Donald Hoy Smith	04/05	2005
Harold C.J. Terhune	01/95	1995	Richard M. Foley	06/05	2005
Carl Todd	01/95	1995	Wayne Brinegar	06/05	2005
Don R. Pate	03/95	1995	Charles B. Moore	09/96	2005
R. James Gear	05/95	1995	Jack Heathman	05/06	2006
Vernon Hess	06/95	1995	Charles Kaiser	09/06	2006
E. K. Edmiston	06/95	1995	Rod Sweetman	08/06	2006
Jack Rine	07/95	1995	Karl Becker	10/06	2006
Lee Cornell	08/95	1995	Frank Hamlin	10/06	2006
John Graves	10/95	1995	Marvin Douglas	12/06	2006
Wilson Rains	10/95	1995	Robert W. Hammond	04/07	2007
Heber Beardmore, Jr.	09/96	1996	Eldon Frazey	04/07	2007
Elmer "Lucky" Opfer	12/96	1996	Pete Amstutz	05/07	2007
Raymond M. Goodin	01/97	1997	Charles Spradlin	05/07	2007
Donald F. Moore	10/92	1997	Donald R. "Bob" Douglass	09/07	2007
Gerald J. Kathol	03/97	1997	Vincent Hiebsch	11/07	2007
James D. Davies	08/88	1997	Glen C. Thrasher	03/08	2008
R. Kenneth Smith	04/97	1997	Peg Walters	06/08	2008
Robert L. Dilts	05/97	1997	Theodore "Ted" Sandberg	07/08	2008
Delmer L. Powers	06/72	1997	James Ralstin	11/08	2008
Gene Falkowski	11/97	1997	Earl Brandt	04/09	2009
Arthur (Bill) Jacques	01/98	1998	Walter DeLozier	05/09	2009
Bus Woods	01/98	1998	Don D. Strong	01/10	2010
Frank M. Brooks	03/98	1998	John Stone	02/10	2010
Robert F. Walters	04/98	1998	Craig Caulk	03/10	2010
Stephen Powell	04/98	1998	Joseph E. Moreland, Jr.	03/10	2010
Deane Jirrels	05/98	1998	Gene Garmon	03/10	2010
William G. Iversen	07/98	1998	James F. Dilts	05/10	2010
Ann E. Watchous	08/98	1998	Jerry Pike	05/10	2010
W.R. "Bill" Murfin	09/98	1998	Donald Hollar	06/10	2010
Donald L. Hellar	11/98	1998	Delbert Costa	08/10	2010
Joseph E. Rakaskas	01/99	1999	John Tanner	08/10	2010
Charles W. Steincamp	02/99	1999	William (Bill) Owen	09/10	2010
Robert and Betty Glover	10/96	1998	Harold (Hal) Brown	10/10	2010
Howard E. Schwerdtfeger	11/98	1999	Edmund G. Lorenz	11/10	2010
W. W. "Brick" Wakefield	03/99	1999	Thomas E. Black	05/11	2011
V. Richard Hoover	01/00	2000	Wayne E. Walcher	07/11	2011
Warren E. Tomlinson	01/00	2000	Henry F. Filson	07/11	2011
James A. Morris	01/00	2000	Thomas Ray	07/11	2011
Eric H. Jager	03/00	2000	Edgar E. Smith	09/11	2012
Kenneth W. Johnson	03/00	2000	Marilyn Messenger	06/13	2013
Dean C. Schaake	03/00	2000	Micheal Mitchell	09/13	2013
Fred S. Lillibridge	05/00	2000	Orvie Howell	11/13	2013
Jerry A. Langrehr	07/00	2000	James Thompson	11/13	2013
Clark A. Roach	07/00	2000	Dick Rowland	09/13	2014
Floyd W. "Bud" Mallonee	10/00	2000	Robbie Thompson	12/13	2014
Ralph W. Ruuwe	09/00	2000	Kris Kennedy	04/14	2015
Robert L. Slamal	02/01	2001	Annette Hedke	02/15	2015
Jerold E. Jespersen	06/01	2001	James Devlin	04/15	2015
William A. Sladek	06/01	2001	Robert Gensch	09/15	2015
Harlan B. Dixon	06/01	2001	Jerald Rains	05/16	2016
Edward B. Donnelly	08/01	2001	Max Houston	05/16	2016
Richard P. Nixon	02/02	2002	Robert "Gus" Messenger	01/17	2017
Robert W. Frensley	12/01	2002	Jimmy Wayne Gowens	04/17	2017
Gerald W. Zorger	01/02	2002			
Don L. Calvin	03/02	2002			

**CHANGE SERVICE REQUESTED**

KGS BULLETIN  
 July-August 2017

## July 2017

Sun	Mon	Tue	Wed	Thu	Fri	Sat
						1
2	3	4	5	6	7	8
9	10	11 KGS Board	12	13	14	15
16	17	18	19	20	21	22
23 30	24 31	25	26	27	28	29

## August 2017

Sun	Mon	Tue	Wed	Thu	Fri	Sat
		1	2	3	4	5
6	7	8 KGS Board	9	10	11	12
13	14	15	16	17	18	19
20	21	22	23	24	25	26
27	28	29	30	31		